

ASX Release27th October 2011**ABN 51 105 991 740****JUPITER MINES LTD**

Level 42
108 St Georges Terrace
Perth, WA, 6000
Australia
Tel: +61 8 9346 5500
Fax: +61 8 9481 5933

Email:info@jupitermines.com

Website:

www.jupitermines.com**Directors**

Brian Gilbertson
Richard Mehan
Paul Murray
Andrew Bell
Priyank Thapliyal
Sun Moon Woo

Greg Durack (COO)

Matt Finkelstein (CFO)

Shares: 1,561,234,945

Unlisted Opts: 5,100,000

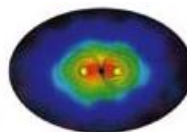
Deferred Shares: 262,255,799

ASX Symbol:

JMS

Currently Developing:

- Iron Ore
- Manganese

**Jupiter Mines Limited**
September 2011 QUARTERLY**SUMMARY**

- Tshipi Borwa Mine Development remains on track for H2 2012 delivery of first ore;
- Tshipi expected to sign the mining contract in late October;
- Significant milestone achieved in Tshipi Borwa's development with the recently held sod turning ceremony;
- Mount Mason drill program completed;
- Mount Ida drill program progressing well;
- Feasibility Studies on both Projects are in progress;
- Consolidated cash position of \$121.8m; and
- Value of marketable securities \$4m.



Tshipi Borwa – Storm water pit excavations



CENTRAL YILGARN IRON ORE PROJECT (CYIP)

Overview

Jupiter is undertaking two Feasibility Studies on its 100% owned CYIP project. The CYIP consists of one smaller DSO project – Mount Mason DSO Hematite Project, and the long life magnetite project – Mount Ida Magnetite Project.

Feasibility Study Developments

Mount Mason DSO Hematite Project

The resource infill drilling at Mount Mason was completed in July, with all assaying data from RC samples and diamond drill core to be received in mid-October.

Resource modelling for Mount Mason has now commenced and is scheduled to be complete during November.

The Geotechnical drilling was also completed during the quarter with the core currently being logged.

To examine mine Hydrology within the planned pit, two cased 300 mm holes have been drilled with pump testing planned to be undertaken in November.



Mount Mason – Diamond drill rig

The metallurgical test work has commenced on the diamond drill core, with four different hematite ore types identified, see pictures below;

1. Biscuit Type Hematite



2. Kanga Type Hematite





3. Solid Hematite



4. Specular Hematite



The solid hematite is the major ore component of the resource. Assay, results summarised below.

HEAD ASSAY ANALYSIS - MOUNT MASON														
SAMPLE NAME	Fe Grade (%)	SiO ₂ Grade (%)	Al ₂ O ₃ Grade (%)	TiO ₂ Grade (%)	MnO Grade (%)	CaO Grade (%)	P Grade (%)	S Grade (%)	MgO Grade (%)	K ₂ O Grade (%)	Na ₂ O Grade (%)	Zn Grade (%)	LOI-371 Grade (%)	LOI-650 Grade (%)
KANGA	62.9	2.58	1.91	1.020	0.120	0.010	0.029	0.097	0.005	0.008	0.012	0.001	2.94	3.33
SOLID HEMATITE	68.4	0.87	0.64	0.028	0.011	0.030	0.029	0.011	0.020	0.002	0.007	0.001	0.22	0.40
BISCUIT	62.9	7.53	0.95	0.002	0.022	0.010	0.041	0.006	0.030	0.001	0.007	0.003	1.25	1.53
SPECULAR HEMATITE	68.8	0.86	0.22	0.002	0.005	0.030	0.023	0.002	0.010	0.001	0.006	0.002	0.08	0.13

HEAD ASSAY ANALYSIS - MOUNT MASON													
SAMPLE NAME	LOI-1000 Grade (%)	As Grade (%)	Ba Grade (%)	Cl Grade (%)	Co Grade (%)	Cr Grade (%)	Cu Grade (%)	Ni Grade (%)	Pb Grade (%)	Sn Grade (%)	Sr Grade (%)	V Grade (%)	Zr Grade (%)
KANGA	3.71	0.001	0.005	0.021	0.001	0.007	0.006	0.001	0.001	0.001	0.001	0.029	0.010
SOLID HEMATITE	0.54	0.001	0.005	0.016	0.001	0.001	0.003	0.001	0.001	0.002	0.001	0.007	0.002
BISCUIT	1.60	0.001	0.005	0.006	0.001	0.001	0.004	0.001	0.001	0.001	0.001	0.002	0.001
SPECULAR HEMATITE	0.27	0.001	0.010	0.017	0.001	0.001	0.004	0.001	0.001	0.001	0.001	0.006	0.001

LOI ADJUSTED VALUES (1000°C)								
SAMPLE NAME	Fe Grade (%)	SiO ₂ Grade (%)	Al ₂ O ₃ Grade (%)	TiO ₂ Grade (%)	MnO Grade (%)	CaO Grade (%)	P Grade (%)	S Grade (%)
KANGA	65.3	2.68	1.98	1.059	0.125	0.010	0.030	0.101
SOLID HEMATITE	68.8	0.87	0.64	0.028	0.011	0.030	0.029	0.011
BISCUIT	63.9	7.65	0.97	0.002	0.022	0.010	0.042	0.006
SPECULAR HEMATITE	69.0	0.86	0.22	0.002	0.005	0.030	0.023	0.002

NOTES

1. Iron ores by Fussion/XRF ME-XRF11b
2. Loss on Ignition, LOI-371, LOI-650 and LOI-1000
3. All met intercepts gave good Fe grades
4. All silicas are acceptable. The biscuit sample is higher at 7.53%
5. All aluminas are acceptable. The kanga sample is higher at 1.91%
6. All titanias are acceptable. The kanga sample is higher at 1.02%
7. Phosphorous and sulphur values are low
8. LOIs are low except for the Kanga sample which was 3.71%.
9. LOI adjusted Fe grades are very acceptable. Very little change in other species
10. There will be some dilution of the Fe and increase in the other species when the non-mineralised horizons are included



From the results, the selected hematite samples show exceptional grade, the next work program will include internal waste to best represent what the mined resource grade is likely to be.

The first pass metallurgical test work program is likely to be completed in early November, upon which the final program will be developed.

Mount Ida Magnetite Project

The infill resource drilling on the Mount Ida Central Zone is progressing well; to date 28,963 metres of RC drilling, 5,664.3 metres of diamond drilling including the geotechnical and PQ metallurgical drilling has been completed. The diamond drilling program is expected to be completed by December 2011 and the RC drilling program by January 2012.

Upon completion of this Central Zone drilling, the RC drill rigs will then undertake resource extensional drilling on the northern and southern zones with the objective of increasing the inferred resource base.

The Feasibility Study is based on the resource determined from the Central Zone, and is expected to be moved into the measured and indicated category.

The four metallurgical holes have now been dispatched to AMMTEC, with a comprehensive metallurgical test work program, including subsequent pilot plant currently under review with the owner's team and ProMet. Once the program is finalised, the test work program will commence in early November.

Jupiter has established a core and sample handling facility at site. All drill cores are logged and cut at site before dispatch to the Laboratory for analysis.



Mount Ida – Logging of core



Three cased 300mm bore holes have also been drilled within the expected Mount Ida open pit in order to conduct pump tests in the near future to evaluate the mine hydrology.

Planning is now in progress to commence the water exploration program early in the New Year. Exploration areas will be targeted with a ground based geophysical survey to best locate the test bores.

To date, the drilling and other technical disciplines of the Feasibility Study are progressing well with all activities on schedule.

TSHIPI KALAHARI MANGANESE PROJECT – JUPITER’S 49.9% JOINT VENTURE INTEREST

Overview

Jupiter has a 49.9% interest in Tshipi é Ntle Manganese Mining (Pty) Ltd (Tshipi). Tshipi owns two manganese projects in the Kalahari Manganese fields, namely Tshipi Borwa and Tshipi Bokone, adjacent to the operating Mamatwan and Wessels mines respectively.

Tshipi Borwa Mine

A ground breaking ceremony for the Tshipi Borwa Mine was recently held in South Africa, marking a significant milestone in the project’s development. The ceremony, which was attended by various local politicians, community representatives, Transnet (South Africa’s integrated freight transport provider) representatives and various press groupings, created significant goodwill and expectations amongst the local stakeholders.



Tshipi Borwa – Waste rock crushing



Tshipi Directors B. Gilbertson and S. Macozoma

Construction

Tshipi Borwa Mine development continues to progress well with initial site clearing completed, soil compacted and building foundations commenced. The project remains on track to commence production during H2 2012.

Tshipi has recorded no Lost Time Injuries, with safety being a key focus of management.



Approximately 124 people are currently engaged in the Tshipi Borwa Mine construction.

During the quarter:

- Site establishment works, including foundations for the stores, mine administration offices and workshops were completed;
- Railway siding earthworks progressed significantly and have been largely completed;
- Rail foundations also progressed well, it is scheduled that ballast and sleepers will be installed in the Q1 2012; and
- A large storm water sump has been constructed; this dam will prevent unnecessary runoff during peak rail fall periods and might also be used as a temporary water storage facility



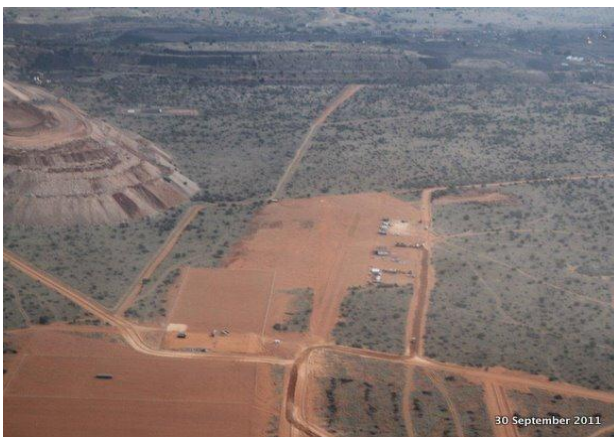
Tshipi Borwa –Railroad siding foundation construction

Tshipi is presently producing its own rock construction material utilising waste rock from a neighbouring mine and a purpose bought mobile crusher plant. The waste rock is required for rail, building and general construction purposes such as the railroad siding foundation.

Presently there have been no delays with long lead items and it is anticipated that the final major outstanding contract, being the mining contract, will be formally awarded during October.

Mobilisation of the earthmoving contractor is scheduled to occur in the early part of Q4 2011 in order to commence pre-stripping. Tshipi has placed the order for the dedicated diesel power generation plant and this is scheduled to be delivered in March 2012.

Regular site photo updates, as construction progresses, will be posted at www.tshipi.co.za.



Tshipi Borwa – Plant and lay-down area



Tshipi Borwa - Rail loop

Logistics

Tshipi has continued its engagement with Transnet with several constructive meetings taking place over the last quarter. While Tshipi as yet does not have a formal contract with Transnet in terms of the MECA process, Tshipi's objective and expectation is to qualify for a portion of the "uncommitted capacity" on the Port Elizabeth export line as part of the 'fair access policy' that Transnet has adopted together with industry.



Financing

The capital budget for the construction of the Tshipi Borwa Mine remains in line with forecasts. To date total expenditure for the advancement of the Tshipi Borwa Mine has been approximately R147 million (\$18.1 million) while a further R347 million (\$44.4 million) has been committed (JMS has contributed its pro-rata share of 49.9% of the amounts listed above). A large portion of the capital yet to be committed will arise from the mining contract.

Operational Readiness

Tshipi management have also been focused on operational readiness with significant efforts being given to adopting the appropriate procedures and systems in terms of safety, financial and operational.

Tshipi is focused on identifying, recruiting and employing the necessary skills in the local Northern Cape. During the quarter Tshipi's mine management has been boosted by the hiring of several top quality and experienced line managers.

Tshipi Bokone

Independent geological consultants are finalising a Mineral Resource estimate for the Tshipi Bokone project from assay results received during the June quarter. Initial assay results confirmed the continuity of mineralisation within the project area.

CORPORATE

Cash Position

At the end of the quarter the Company had a consolidated cash balance of \$121.8m and held marketable securities to the value of \$4m.

Yours Faithfully

Jupiter Mines Limited

Richard Mehan
Managing Director & CEO

Competent Person's Statement

Senior Geologist: Kurt Kelers - Competent Person

The information in this announcement that relates to Exploration Results is based on information compiled by Mr Kurt Kelers who is a Member of the Australian Institute of Geoscientist and a full-time employee of Jupiter Mines Limited. Mr Kelers has sufficient experience which is relevant to the style of mineralisation and type of deposit under consideration and to the activity that he is undertaking to qualify as a Competent Person as defined in the 2004 Edition of the 'Australasian Code for Reporting of Exploration Results, Mineral Resources and Ore Reserves'. Mr Kelers consents to the inclusion in the announcement of the matters based on his information in the form and context in which it appears Mr Kelers holds the position of Senior Geologist with Jupiter Mines Limited